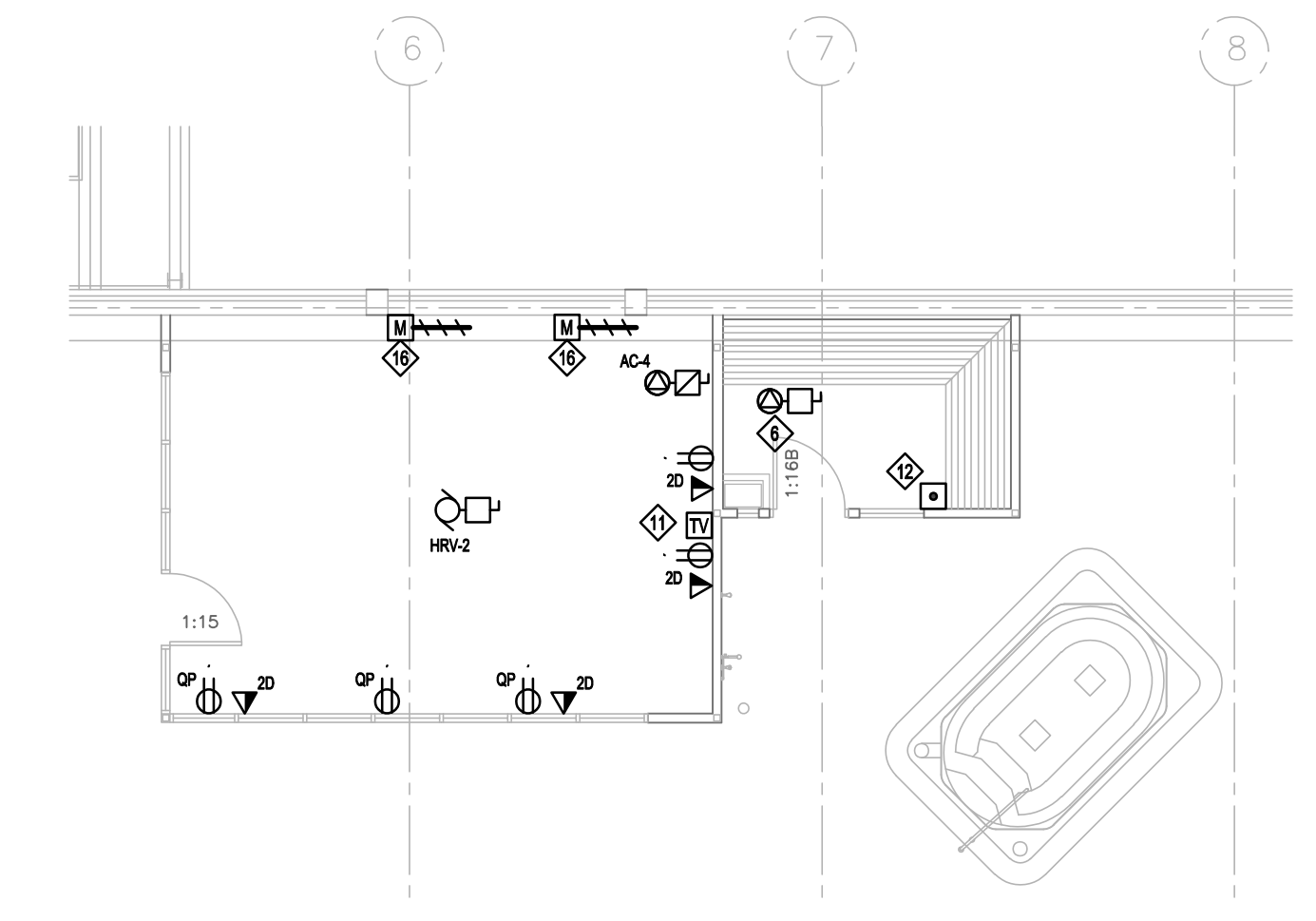
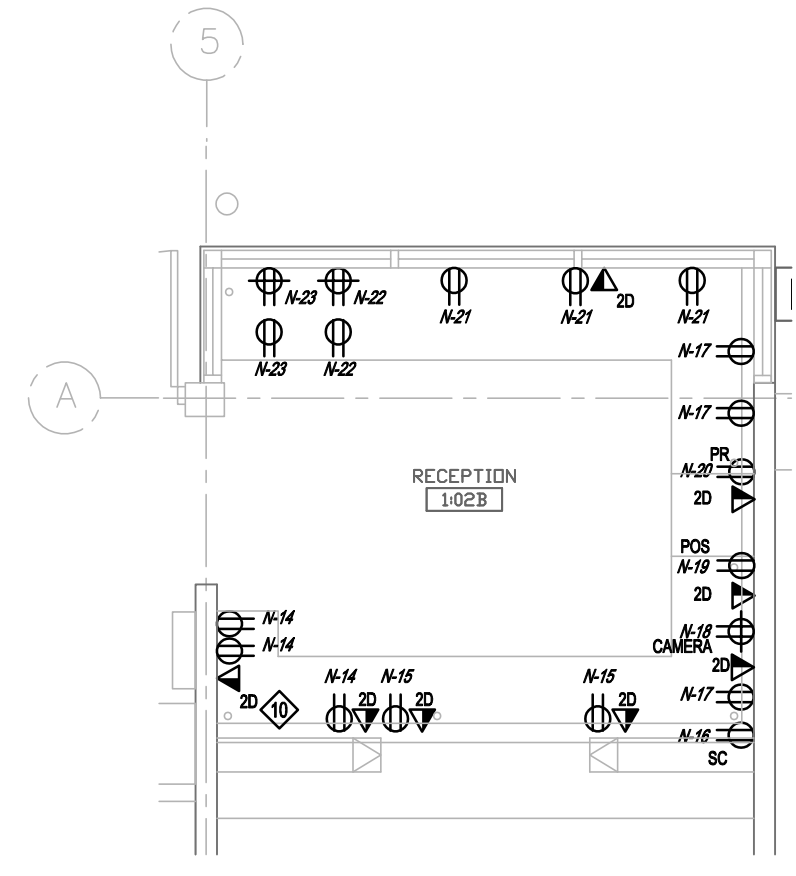


1 MAIN FLOOR PLAN POWER & SYSTEMS
EP2.1 SCALE: 1:100



2 MPR / SAUNA FLOOR PLAN POWER & SYSTEMS
EP2.1 SCALE: 1:100



3 RECEPTION AREA POWER & SYSTEMS
EP2.1 SCALE: 1:50

- NOTES:**
1. PROVIDE ONE (1) 20A T-SLOT RECEPTACLE FOR CHANGE TABLE.
 2. PROVIDE RECEPTACLE AT HIGH LEVEL FOR CHAIR CHARGER.
 3. PROVIDE POWER AND ROUGH IN FOR DOOR ASSIST AND CONTROLS. MAKE ALL FINAL CONNECTIONS.
 4. PROVIDE POWER AND ROUGH IN FOR DOOR ASSIST AND CONTROLS / ENSURE TO COORDINATE WITH GC AND HARDWARE SUPPLIER FOR ALL CONTROLS. NEW CARD READER ON EXISTING BRICK - PATHWAYS/IDE
 5. PROVIDE NEW MIRCOM FIRE ALARM CONTROL PANEL TO REPLACE EXISTING.
 6. WIRE AND CONNECT SAUNA HEATER IN NEW LOCATION SHOWN TO EXISTING POWER FEEDING SAUNA IN EXISTING LOCATION.
 7. EXISTING LIGHTING CONTROL PANEL SHALL BE RELOCATED. A NEW RECESSED CABINET SHALL BE PROVIDED TO HOUSE LIGHTING RELAYS.
 8. RELOCATED DROWNING ALARM AND CONTROL PANEL. WIRE AND CONNECT IN NEW LOCATION.
 9. RELOCATE CUH-2 TO NEW LOCATION SHOWN. WIRE AND CONNECT TO EXISTING CIRCUIT.
 10. PROVIDE ASSIST BUTTON TO BE TIED INTO RECEPTION DESK INDICATING LIGHT. PROVIDE TWO (2) INDICATING LIGHTS WITH LAMACOID TO IDENTIFY ROOM.
 11. REFER TO ARCHITECTURAL INTERIOR ELEVATIONS FOR MOUNTING HEIGHTS.
 12. RELOCATE EXISTING SAUNA PANIC ALARM TO NEW LOCATION. LOCATE ALARM AT RECEPTION.
 13. WIRE AND CONNECT CONTROLS FOR CF-1 THRU CF-6 IN OFFICE.
 14. RELOCATE DROWNING ALARM AND BUTTON TO NEW LOCATIONS. WIRE AND CONNECT TO EXISTING SYSTEM.
 15. RELOCATE MICROPHONE OUTLET TO NEW LOCATION. WIRE AND CONNECT TO EXISTING SYSTEM.
 16. PROVIDE ONE DEDICATED CIRCUIT FROM PANEL F IN CRAWLSPACE FOR 2 MOTORIZED DAMPERS.
 17. PROVIDE 1.5 kW ELECTRIC BASEBOARD HEATER EQUAL TO OULET OF M1508 RATED FOR 208V/1Ø CW BIT.
 18. NOT USED
 19. RELOCATE EXISTING POWER FOR WALL MOUNTED FAN.

**ENGINEERS
GEOSCIENTISTS
MANITOBA**
Certificate of Authorization
MCW Consultants Ltd.
No. 7183

MCW
13600
215-821 Wellington Avenue
Winnipeg, Manitoba, R3M 0G4
Phone: (204) 779-7900
www.mcw.com

No.	Date	Issue / Revision	By
2	JULY 13, 2022	ISSUED FOR ADD#06	
1	JUNE 21, 2022	ISSUED FOR CONSTRUCTION	DG

Drawn By: MFP
Printing Date:

Drawings and specifications, as instruments of service are the property of the architects, the copyright in the same being reserved to them. No reproduction may be made without the permission of the architects, and when made, must bear their names. All prints to be returned.

The contractor is to verify dimensions and data noted herein with conditions on the site and is held responsible for reporting any discrepancy to the architects for adjustment.

LM **LM Architectural Group**
500-136 Market Ave
Winnipeg, Manitoba, Canada, R3B 0P4
t: (204) 942.0681 f: (204) 943.8676
www.lm-architects.com

**CITY OF WINNIPEG
BONIVITAL POOL RENEWAL**

1215 Archibald St, Winnipeg, MB.

**MAIN FLOOR PLAN
POWER & SYSTEMS**